

<b>Work Up Name</b>	<b>Advisen_Short_Report_002</b>	<b>Currency</b>	<b>USD</b>
<b>Company Name</b>	<b>Team Enterprises Inc</b>	<b>Ticker</b>	
<b>Created User</b>	<b>Glen Carey</b>	<b>Date Created</b>	<b>12/19/08 3:42 PM</b>
<b>Mod User</b>	<b>Glen Carey</b>	<b>Date Mod</b>	<b>12/19/08 3:42 PM</b>

**Advisen Short Report:**

The following Advisen Short Report puts Advisen data and information into your hands without logging into Advisen.com.

We can provide additional information at your request, such as:

- Premium, limit, retention benchmarking by coverage
- Policy wording comparisons
- Large Losses by Industry
- News
- Email alerts on companies of your choice

Simply contact an Advisen representative at 212-897-4800 or email [support@advisen.com](mailto:support@advisen.com)

## Step 1 : Advisen Short Report

---

### Company Overview

Date	12/19/2008
Company Name	Team Enterprises Inc
Address	12240 SW 53rd St Ste 506
City	Fort Lauderdale
State	FL
Zip	33330-3314
Phone Number	954 252-1338
Fax	954 966-6336
State of Incorporation	
Public/Private	PRV
SIC Industry Code	8742
SIC Industry	Management Consulting Services
Established	1996
Website Address	
Sales	\$ 7.30M
Number of Employees	105

### Business Description

Team Enterprises Inc is engaged in furnishing operating counsel and assistance to managements of private, nonprofit, and public organizations.

**Competition****Competitors by SIC Code, Sales, & Country**

Name	Sales	Employees	Sales Per Employee
PricewaterhouseCoopers LLP	25,200	146,000	172,602.73
Health Care Service Corporation	12,971.60	14,000	926,542.85
McKinsey & Company, Inc.	4,370	12,900	338,759.68
Booz Allen Hamilton, Inc.	4,100	18,000	227,777.77
ChemConnect, Inc.	3,647	90	40,522,222.22
Booth Creek Management Corporation	2,190	11	199,090,909.09
Hospitality Marketing Concepts, Inc.	2,000	915	2,185,792.34
Asset Marketing Systems Insurance Services, LLC	1,600	175	9,142,857.14
Towers Perrin Forster & Crosby Inc.	1,420	5,484	258,935.08
Amon Investments, LLC	1,300	2	650,000,000
Bain & Company	1,130	3,200	353,125
The Boston Consulting Group Inc	1,050	4,450	235,955.05
A.T. Kearney, Inc.	798	2,500	319,200
U. S. Central Credit Union	763.29	270	2,826,996.29
Taylor Corporation	762.80	15,000	50,853.33
Catholic Health System of Long Island, Inc.	637	13,500	47,185.18
Hunter Roberts Construction Group LLC	606.24	355	1,707,728.84
Doctors Community Healthcare Corp	600	4,100	146,341.46
University of Cincinnati Medical Associates, Inc	557.13	350	1,591,805.71
Fairfield Maxwell Ltd.	500	10	50,000,000

**Directors & Officers**

Name	Category	Age	Position	Officer Since	Director Since
Daniel K. Gregory	Executives		President	N/A	N/A

**Credit Details****Experian Intelliscore**

Experian Intelliscore:	94.12
Experian Intelliscore Percentile:	87
Experian Intelliscore Probability:	0.01

**Benefit Plans (Form 5500) - Entire Company Hierarchy**

<b>Plan Fiscal Year:</b>	2005	<b>Plan Type:</b>	Defined Contributions	<b>Plan Number:</b>	1
<b>Plan Name:</b>	TEAM ENTERPRISES, INC. 401K PLAN	<b>Plan Assets:</b>	866,773	<b>Total Number of Active Participants:</b>	174
<b>Administrator:</b>	TEAM ENTERPRISES, INC.	<b>Plan Characteristics:</b>	2E: Profit-sharing	<b>Accountant's Opinion:</b>	Unqualified
<b>Investment Manager(s):</b>	NA				

**Trustee(s):** NA

---

## Federal Dockets - Labor

<b>Caption</b>	<b>Docket Number</b>	<b>Filing Date</b>	<b>Description</b>	<b>Court</b>
Ray v. Team Associates Inc, et al	4:01cv597	02/20/2001	Labor Litigation	S.D. Tex.

## Federal Dockets - Auto

<b>Caption</b>	<b>Docket Number</b>	<b>Filing Date</b>	<b>Description</b>	<b>Court</b>
Stewart v. Zuran et al	2:06cv364	11/01/2006	Motor Vehicle	N.D. Ind.

## Federal Dockets - Torts

<b>Caption</b>	<b>Docket Number</b>	<b>Filing Date</b>	<b>Description</b>	<b>Court</b>
In Re: Service Mar Ind Inc	2:00cv2344	08/09/2000	Appeal 28 USC 158	E.D. La.

## Federal Dockets - Contracts

<b>Caption</b>	<b>Docket Number</b>	<b>Filing Date</b>	<b>Description</b>	<b>Court</b>
Continental Western v. Team Co, LLC, et al	1:05cv1010	12/05/2005	Insurance	W.D. Tex.
Martin v. Prudential Insurance, et al	1:02cv4159	08/22/2002	Insurance	D. N.J.
Hartford Fire Ins Co v. Acceptance Ins Co, et al	4:00cv680	02/28/2000	Insurance	S.D. Tex.
Donald R Chase v. Team Companies, et al	2:00cv869	01/26/2000	Other Contract	C.D. Cal.

## Federal Dockets - Trademark

<b>Caption</b>	<b>Docket Number</b>	<b>Filing Date</b>	<b>Description</b>	<b>Court</b>
Rudy's Texas Bar-B-Q, et al v. Gearhart, et al	1:05cv584	07/27/2005	Trademark	W.D. Tex.

## Federal Dockets - Environmental

<b>Caption</b>	<b>Docket Number</b>	<b>Filing Date</b>	<b>Description</b>	<b>Court</b>
Team Enterprises Inc v. Legacy Vulcan Corp, et al	1:08cv1050	07/21/2008	Environmental	E.D. Cal.
Team Enterprises, LLC v. Western Investment Real Estate Trust Et A	1:08cv872	06/20/2008	Environmental	E.D. Cal.
Hinds Investments LP, et al v. Team Enterprises, Inc, et al	1:07cv703	05/10/2007	Environmental	E.D. Cal.
Lyondell Chem Co, et al v. Albemarle Corp, et al	1:01cv890	12/06/2001	Environmental	E.D. Tex.
Mark Weinstein v. GTS Property Santa, et al	2:00cv6667	06/21/2000	Environmental	C.D. Cal.

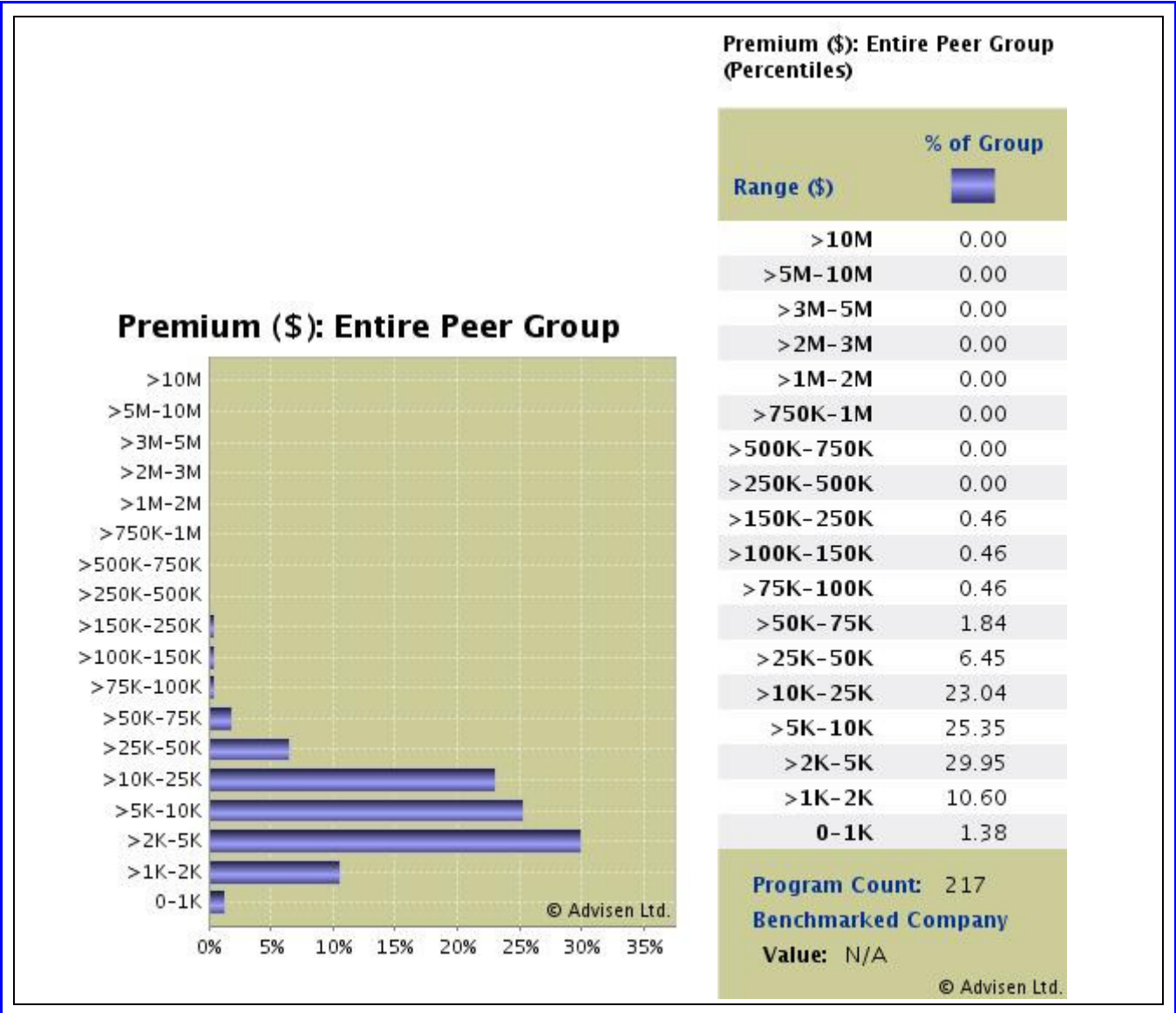
## Federal Dockets - Other

<b>Caption</b>	<b>Docket Number</b>	<b>Filing Date</b>	<b>Description</b>	<b>Court</b>
In Re: Svc Marine Ind Inc	2:00cv579	02/25/2000	Withdrawal 28 USC 157	E.D. La.

**Team Enterprises Inc**  
Professional Liability: Consultant  
Advisen Dataset

Current Peer Group	
<b>Industries:</b>	Management Consulting
<b>Company Type:</b>	Private
<b>Financials (Revenues):</b>	0-15,000,000
<b>Demographics (Employees):</b>	None
<b>Location:</b>	United States
<b>Time Periods:</b>	Trailing 12 months
<b>Coverage:</b>	Professional Liability
<b>LOBs:</b>	Consultant
<b>Program Characteristics:</b>	None
<b>Peer Group Size:</b>	218

© Advisen Ltd. +1.212.897.4800



**Premium (\$): Entire Peer Group (Percentiles)**

Range (\$)	% of Group
>10M	0.00
>5M-10M	0.00
>3M-5M	0.00
>2M-3M	0.00
>1M-2M	0.00
>750K-1M	0.00
>500K-750K	0.00
>250K-500K	0.00
>150K-250K	0.46
>100K-150K	0.46
>75K-100K	0.46
>50K-75K	1.84
>25K-50K	6.45
>10K-25K	23.04
>5K-10K	25.35
>2K-5K	29.95
>1K-2K	10.60
0-1K	1.38

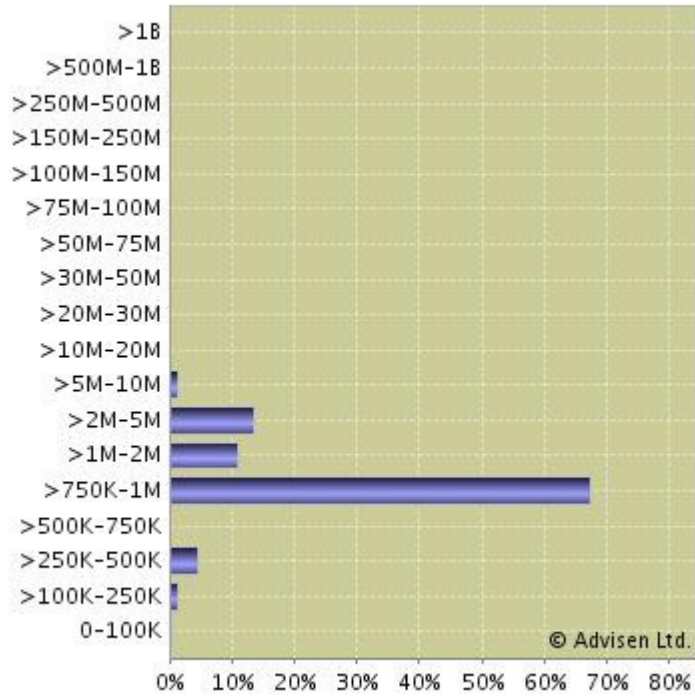
**Program Count:** 217

**Benchmarked Company**

**Value:** N/A

© Advisen Ltd.

### Limit (\$): Entire Peer Group



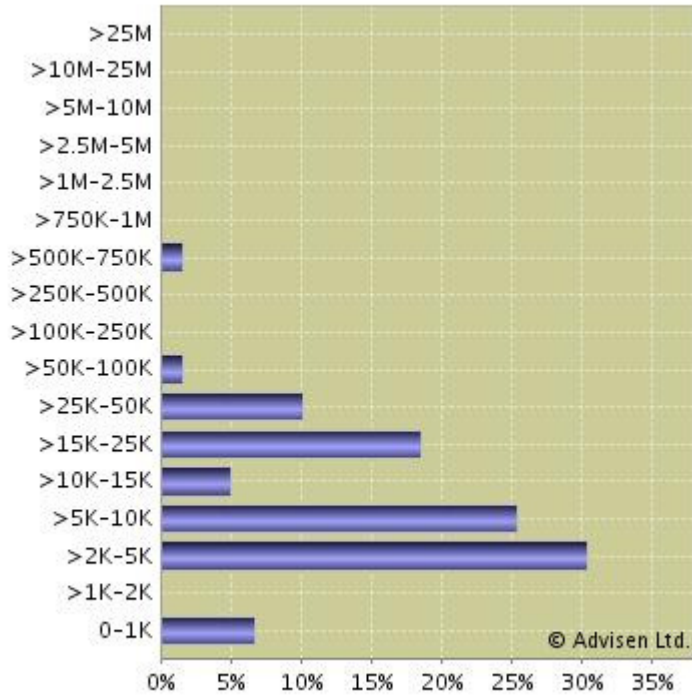
### Limit (\$): Entire Peer Group (Percentiles)

Range (\$)	% of Group
>1B	0.00
>500M-1B	0.00
>250M-500M	0.00
>150M-250M	0.00
>100M-150M	0.00
>75M-100M	0.00
>50M-75M	0.00
>30M-50M	0.00
>20M-30M	0.00
>10M-20M	0.00
>5M-10M	1.38
>2M-5M	13.76
>1M-2M	11.01
>750K-1M	67.43
>500K-750K	0.00
>250K-500K	4.59
>100K-250K	1.38
0-100K	0.46

**Program Count:** 218  
**Benchmarked Company Value:** N/A

© Advisen Ltd.

### Retention (\$): Entire Peer Group



### Retention (\$): Entire Peer Group (Percentiles)

Range (\$)	% of Group
>25M	0.00
>10M-25M	0.00
>5M-10M	0.00
>2.5M-5M	0.00
>1M-2.5M	0.00
>750K-1M	0.00
>500K-750K	1.69
>250K-500K	0.00
>100K-250K	0.00
>50K-100K	1.69
>25K-50K	10.17
>15K-25K	18.64
>10K-15K	5.08
>5K-10K	25.42
>2K-5K	30.51
>1K-2K	0.00
0-1K	6.78

**Program Count:** 59

**Benchmarked Company**

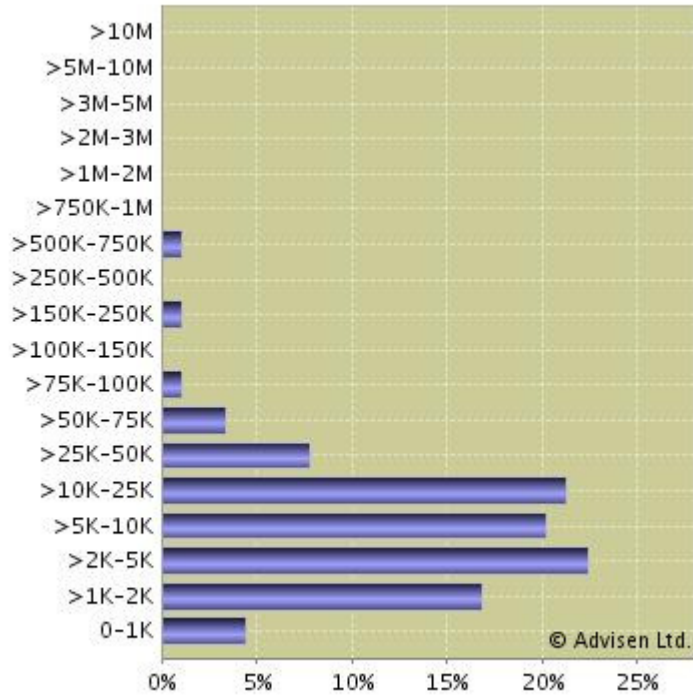
**Value:** N/A

© Advisen Ltd.

**Team Enterprises Inc**  
**Management Liability: Directors & Officers Liability**  
**Advisen Dataset**

Current Peer Group	
<b>Industries:</b>	Management Consulting
<b>Company Type:</b>	Private
<b>Financials (Revenues):</b>	0-15,000,000
<b>Demographics (Employees):</b>	None
<b>Location:</b>	United States
<b>Time Periods:</b>	Trailing 12 months
<b>Coverage:</b>	Management Liability
<b>LOBs:</b>	Directors & Officers Liability
<b>Program Characteristics:</b>	None
<b>Peer Group Size:</b>	<b>90</b>
<small>© Advisen Ltd. +1.212.897.4800</small>	

### Premium (\$): Entire Peer Group



### Premium (\$): Entire Peer Group (Percentiles)

Range (\$)	% of Group
>10M	0.00
>5M-10M	0.00
>3M-5M	0.00
>2M-3M	0.00
>1M-2M	0.00
>750K-1M	0.00
>500K-750K	1.12
>250K-500K	0.00
>150K-250K	1.12
>100K-150K	0.00
>75K-100K	1.12
>50K-75K	3.37
>25K-50K	7.87
>10K-25K	21.35
>5K-10K	20.22
>2K-5K	22.47
>1K-2K	16.85
0-1K	4.49

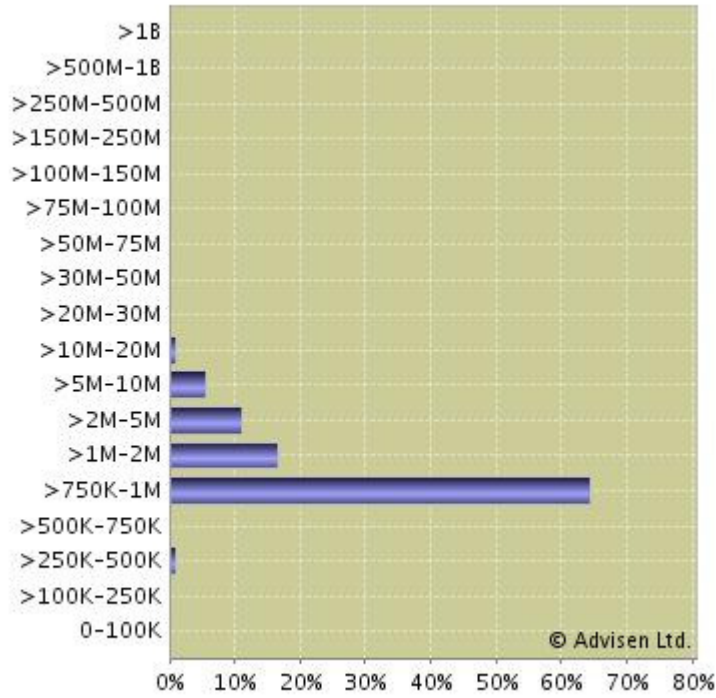
**Program Count:** 89

**Benchmarked Company**

**Value:** N/A

© Advisen Ltd.

### Limit (\$): Entire Peer Group



### Limit (\$): Entire Peer Group (Percentiles)

Range (\$)	% of Group
>1B	0.00
>500M-1B	0.00
>250M-500M	0.00
>150M-250M	0.00
>100M-150M	0.00
>75M-100M	0.00
>50M-75M	0.00
>30M-50M	0.00
>20M-30M	0.00
>10M-20M	1.11
>5M-10M	5.56
>2M-5M	11.11
>1M-2M	16.67
>750K-1M	64.44
>500K-750K	0.00
>250K-500K	1.11
>100K-250K	0.00
0-100K	0.00

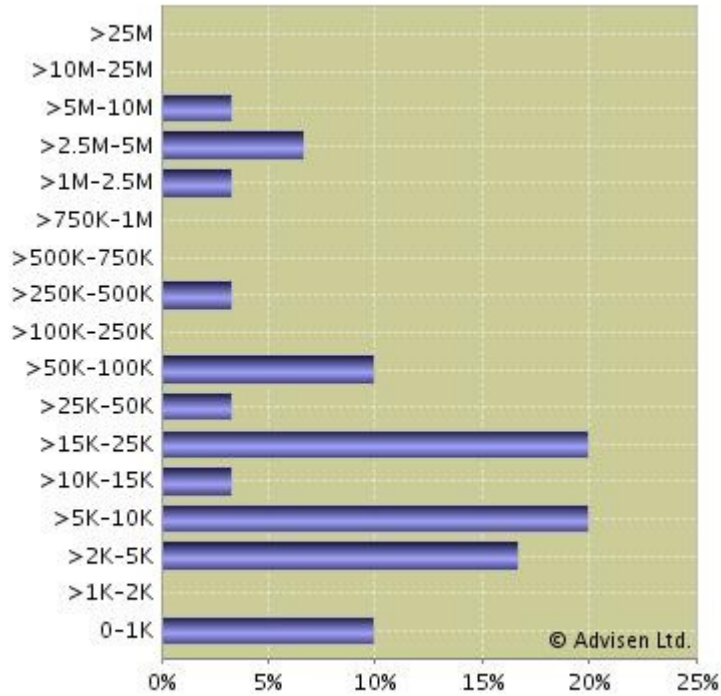
**Program Count:** 90

**Benchmarked Company**

**Value:** N/A

© Advisen Ltd.

### Retention (\$): Entire Peer Group



### Retention (\$): Entire Peer Group (Percentiles)

Range (\$)	% of Group
>25M	0.00
>10M-25M	0.00
>5M-10M	3.33
>2.5M-5M	6.67
>1M-2.5M	3.33
>750K-1M	0.00
>500K-750K	0.00
>250K-500K	3.33
>100K-250K	0.00
>50K-100K	10.00
>25K-50K	3.33
>15K-25K	20.00
>10K-15K	3.33
>5K-10K	20.00
>2K-5K	16.67
>1K-2K	0.00
0-1K	10.00

Program Count: 30

Benchmarked Company

Value: N/A

© Advisen Ltd.

**Team Enterprises Inc**  
**Liability: Umbrella/Excess**  
**Advisen Dataset**

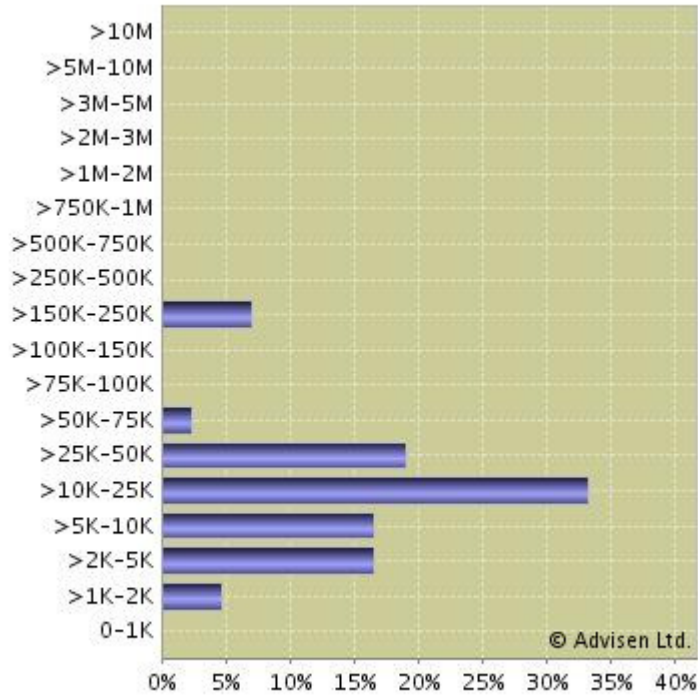
**Current Peer Group**

**Industries:** Management Consulting  
**Company Type:** Private  
**Financials (Revenues):** 0-15,000,000  
**Demographics (Employees):** None  
**Location:** United States  
**Time Periods:** Trailing 12 months  
**Coverage:** Liability  
**LOBs:** Umbrella/Excess  
**Program Characteristics:** None

**Peer Group Size:** 42

© Advisen Ltd. +1.212.897.4800

### Premium (\$): Entire Peer Group



### Premium (\$): Entire Peer Group (Percentiles)

Range (\$)	% of Group
>10M	0.00
>5M-10M	0.00
>3M-5M	0.00
>2M-3M	0.00
>1M-2M	0.00
>750K-1M	0.00
>500K-750K	0.00
>250K-500K	0.00
>150K-250K	7.14
>100K-150K	0.00
>75K-100K	0.00
>50K-75K	2.38
>25K-50K	19.05
>10K-25K	33.33
>5K-10K	16.67
>2K-5K	16.67
>1K-2K	4.76
0-1K	0.00

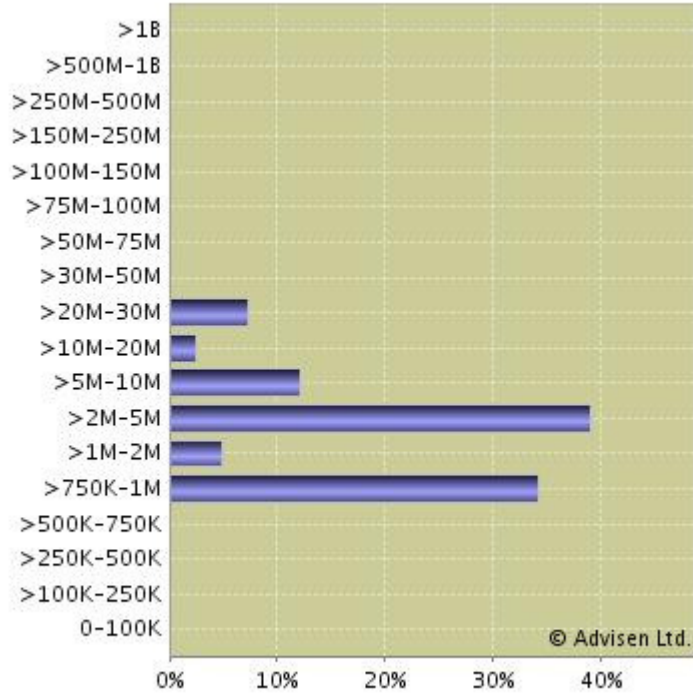
**Program Count:** 42

**Benchmarked Company**

**Value:** N/A

© Advisen Ltd.

### Limit (\$): Entire Peer Group



### Limit (\$): Entire Peer Group (Percentiles)

Range (\$)	% of Group
>1B	0.00
>500M-1B	0.00
>250M-500M	0.00
>150M-250M	0.00
>100M-150M	0.00
>75M-100M	0.00
>50M-75M	0.00
>30M-50M	0.00
>20M-30M	7.32
>10M-20M	2.44
>5M-10M	12.20
>2M-5M	39.02
>1M-2M	4.88
>750K-1M	34.15
>500K-750K	0.00
>250K-500K	0.00
>100K-250K	0.00
0-100K	0.00

**Program Count:** 41  
**Benchmarked Company Value:** N/A

© Advisen Ltd.

# Large Losses for the Management Consulting Industry by Likely Coverage

**Cases Filtered For:**

**Company Filters**

**Company Type:** Private  
**SALES:** Less than \$25M

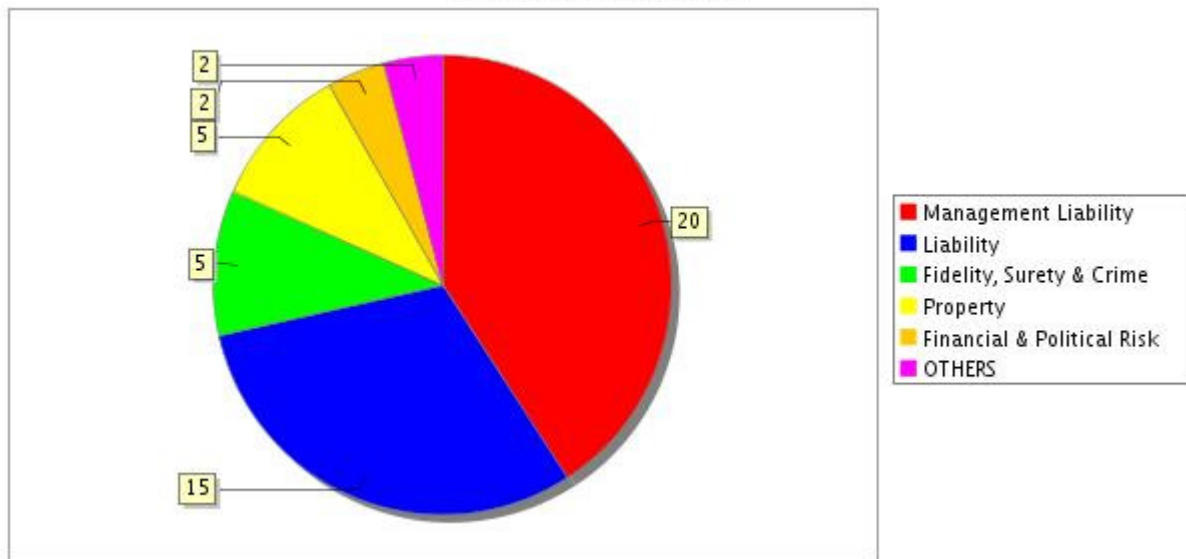
**Industry Filters**

**Industries:** 653010 - Management Consulting

**Graph Filters**

**Characteristic:** Likely Coverage

**Number of Cases Chart**



**Total \$ Values of Cases Chart**

